

ACCESS


We improve access to mental health services by removing stigma and reducing barriers to care.

- 24/7 care as a 988 Suicide Prevention Lifeline and Disaster Distress Helpline crisis center
- In-person and telehealth counseling and psychiatric services
- Quality services that are financially within reach
- Serving individuals most in need
- Inclusive care for all

COMMUNITY

Provident is a valuable community resource.

- Community leader since 1860, with a rich history with the Community Fund, Brown School, Visiting Nurse Association, and Urban League
- Thought leadership in training, community education, advocacy, and cultural competencies
- Equitable employer



At Provident Behavioral Health we inspire hope because we believe mental wellness is the foundation of a life well lived.

COMPREHENSIVE SERVICES

We offer adaptive, evolving services delivered with a high level of expertise.

- 24/7 Crisis Services
- Counseling and Access Center
- Psychiatric Services
- Behavioral Health Intervention Specialists on school campuses
- Mary Ryder Home intensive residential treatment setting

NEED

The need for our services is far-reaching. We serve:

- Those at risk or experiencing mental health issues or risk of suicide
- Those with access issues due to geographical, stigma, barriers, or limited mental health resources
- Those with financial barriers or insufficient insurance
- Available for youth, adults, and older adults



Serving Those With The Greatest Need

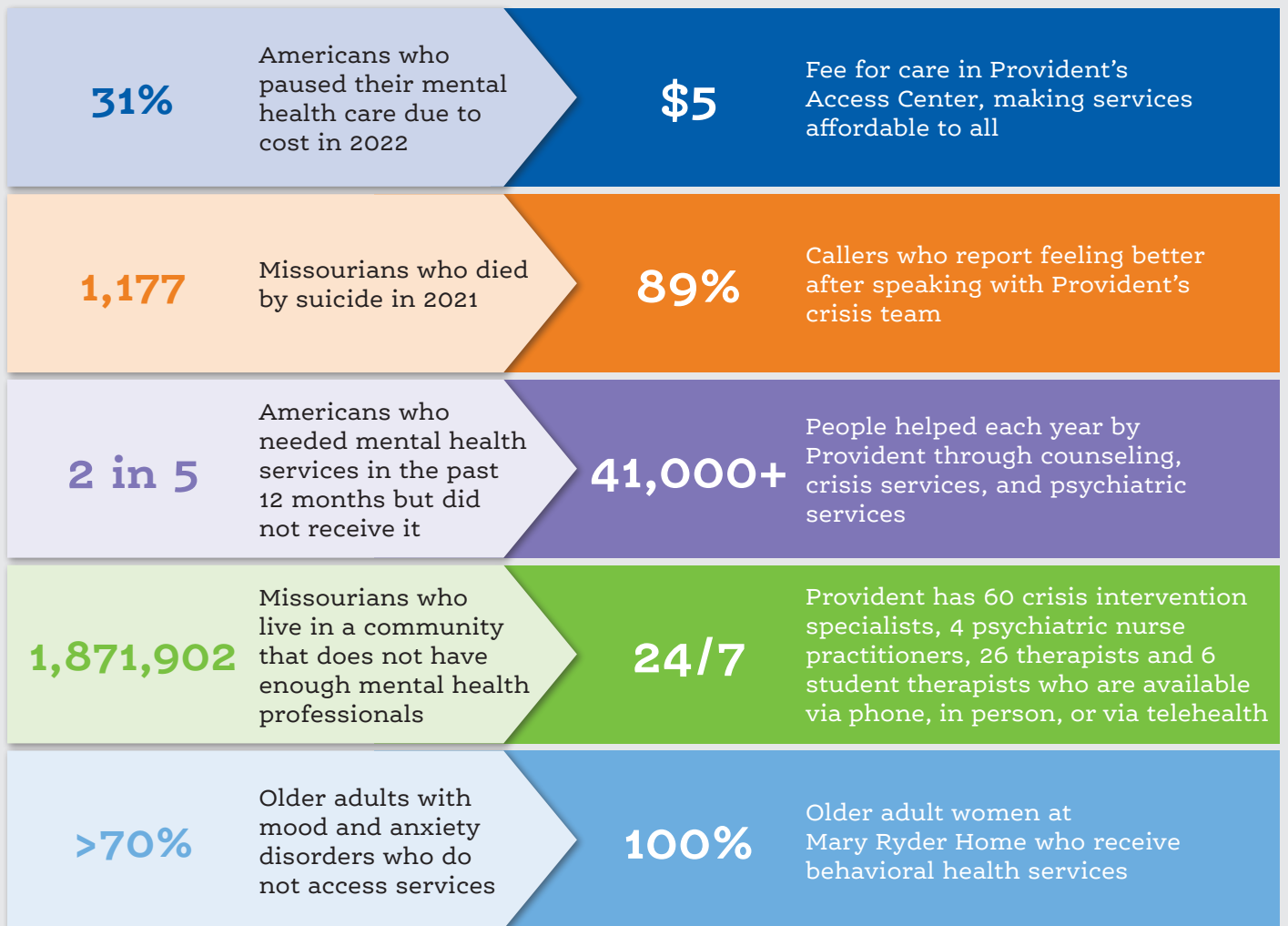
Provident has been serving the St. Louis community and beyond for 163 years. We have a special focus on **inclusive** and **accessible** services, especially for the underserved, defined as anyone experiencing a mental health risk or at risk of suicide; anyone with challenges accessing mental health services due to geography, financial barriers, or stigma; and anyone who is uninsured or underinsured.

Provident served 41,708 individuals in 2022 and 38% had an annual household income of less than \$30,000.

Building Brighter Futures

For individuals, behavioral health is deeply connected to physical health outcomes, social stability, and economic prosperity. It's also important to our community because when our friends and neighbors are living well, it allows us all to thrive.

Here are some statistics that illustrate how Provident makes a difference for people and the community each day:



These numbers illustrate why Provident's mission is **Building brighter futures** through exceptional behavioral health services, especially for those with the greatest need.

Message from our leadership



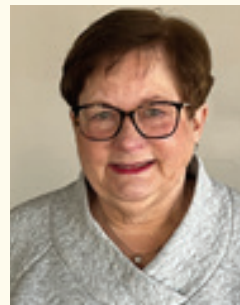
Provident has seen remarkable growth and diversity of services over the past few years. Change and growth can be a wonderful thing but it also takes time and energy and resources.

Is it worth it?

As I think about the 40,000+ individuals who call our hotline annually, and thousands of individuals who rely on us for exceptional counseling, medication management, school and community-based services, and residential treatment—the easy answer is “yes”. I am a witness to staff who care passionately about the people they serve and who constantly consider creative ways to serve this community in a meaningful way. I work alongside community leaders, Board and Advisory Council members, who put thought leadership to good, hard work, all in the name of providing expansive and exceptional care, especially to those who need it most.

When I came to Provident seven years ago, I knew this was a special place filled with special people doing special work. And, not a day has passed when I haven't been inspired, engaged, and fulfilled by what I see around me. There is much work yet to be done, but we have the will and the expertise to continue to move in the right direction.

Kevin Drollinger
President and Executive Director



The future of Provident is committed to providing hope, access, and care for all people in the St. Louis region with mental health needs.

From children in schools to older adults in the community, Provident provides prevention programs, counseling, psychiatric services, crisis intervention, and suicide prevention. We have an Access Center to meet urgent counseling needs and we provide crisis counselors for the 988 Suicide Prevention Lifeline. We are the “go-to” place for behavioral health in St. Louis.

I am retired from 50 years of experience in nursing, and most of those years were as an administrator in Emergency Services. I experienced so many challenges in caring for patients with behavioral health illnesses during those years. Many of the physical conditions patients exhibited could have been prevented had they had access to behavioral health services. Depression and stress can sometimes segue into abnormal physical conditions such as ulcers, colon abnormalities, and sometimes even heart attacks. Depression is also one of the leading causes of alcoholism, drug overdose, and suicide. Too often, we saw the negative impact of patients who suffered from long-term behavioral health problems.

The barriers to patients receiving timely, comprehensive mental healthcare were our biggest challenge, oftentimes more difficult than taking care of trauma patients. Early access to behavioral health services can prevent so many mental and physical health conditions and this is what Provident Behavioral Health provides. I am pleased to be part of this agency that continues to faithfully serve the St. Louis community.

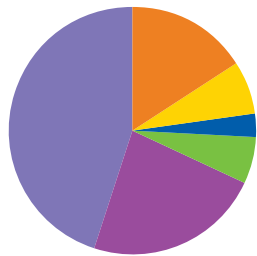
Marianne Fournie, RN
Board Chair

2022 Financial Statement

Provident Behavioral Health and Mary Ryder Home joined in 2019 with shared governance and leadership. Each entity retained their original 501c3 and have separate financial data.

Provident

2022 Revenues



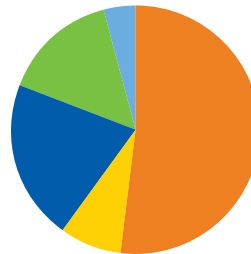
United Way	\$1,336,580
Foundations	\$621,239
Corporations	\$275,781
Individuals	\$506,630
State/Local Government*	\$1,855,413
Federal Government**	\$0
Fee for Service	\$3,635,216
Pension-Related Changes	\$4,330,536
Total	\$12,561,395

Significant increase in revenue and expense for 2022 reflects the impact of the settlement costs and change in periodic pension costs from derisking and terminating the pension plan.

*Children's Service Fund \$1,335,183
ARCHS \$495,230
St. Louis Mental Health Board \$25,000

**PPP Loan Forgiveness

2022 Expenses



Counseling & Psychiatric Services	\$5,951,677
Afterschool	\$879,010
Crisis Services	\$2,432,235
Management & General	\$1,672,792
Fundraising	\$498,647
Total	\$11,434,361

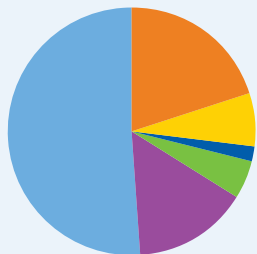
Operating Surplus	\$1,127,034
Investment Gain (Loss) in Excess of Amounts Designated for Operations	\$(415,383)
Loss on Disposal of Fixed Assets	\$0
Total Beginning Net Assets	\$2,828,919
Total Ending Net Assets	\$3,540,570
Change in Net Assets	\$711,651

Financial information is based on unrestricted net assets without donor restrictions.



Mary Ryder Home

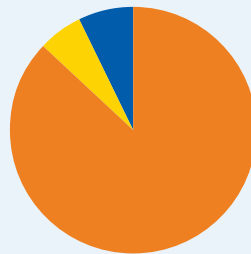
2022 Revenues



United Way	\$320,160
Foundations	\$109,121
Corporations	\$20,682
Individuals	\$76,741
State/Local Government	\$0
Federal Government*	\$225,900
Fee for Service	\$789,387
Total	\$1,541,991

*PPP Loan Forgiveness

2022 Expenses



Resident Services	\$1,627,794
Management & General	\$124,224
Fundraising	\$124,836
Total	\$1,876,854

Operating Surplus	\$(334,863)
Investment Gain (Loss) in Excess of Amounts Designated for Operations	\$57
Loss on Disposal of Fixed Assets	\$0
Total Beginning Net Assets	\$1,936,661
Total Ending Net Assets	\$1,601,661
Change in Net Assets	\$(334,806)

Financial information is based on unrestricted net assets without donor restrictions.



2023 Board of Directors

Marianne Fournie, Board Chair
Retired Registered Nurse
and Clinical Director
BJH Healthcare

Robert J. Wagner, Vice Chair
Partner
Thompson Coburn, LLP

**Edward Lawlor, Ph.D,
Immediate Past Board Chair**
William E. Gordon Distinguished
Professor and Dean Emeritus
Washington University

**Thomas E. Williamson,
Treasurer**
Partner
RubinBrown, LLP

Kelly Dolan, Secretary
Business Owner
H.S. Clay House Bed & Breakfast

**Charles J. Wieggers, Nominating
and Governance Chair**
President
Triad Bank

**Theresa Menk,
Development Chair**
Executive Director of
Corporate Relations
Washington University

**Robert Sanders,
Compensation Chair**
Consultant, Adjunct Professor,
Retired HR Executive

Erica Abbett
Director of Communications
Spectrum Brands

Tom Ackerman
Sports Director
KMOX

Peter Ambrose, Jr. Ph.D
Retired Optum Behavioral
Health Executive

Hon. Nannette Baker
Retired United States Magistrate
Judge

Diane Beckerle O'Brien
Associate Teaching Professor
and MSW Program Director
University of Missouri-St. Louis

Denise Bentele
President and CEO and Owner
Common Ground Public
Relations

John Butler
Partner
RubinBrown, LLP

Renita Duncan
Partner-In-Charge
RubinBrown, LLP

Ida Early
Community Volunteer

John D. Elser II
Retired Edward Jones Executive

Adam Fournie
Analyst, Product Review
Edward Jones

Karen Friedman
Community Volunteer

Michael Girsch
Vice President and
General Manager
St. Louis Cardinals

Jack B. Lay
Retired RGA Executive

Kimberly McBride
Principal
Edward Jones

Erick Messias, MD, MPH, Ph.D
Chair of Department of
Psychiatry and Behavioral
Neurosciences
St. Louis University School of
Medicine

Marcelle Pires
Vice President—Global
Customer Success Center
of Excellence
Bayer

**Mayola Rowser, Ph.D, DNP,
FNP, PMHNP**
Community Volunteer

Jill Schupp
Retired Missouri State Senator

Emily Tinges
Investor Relations Analyst
Reinsurance Group of
America, Inc.

Henry S. Webber
Principal
Urban Impact Advisors

Risa Zwerling
Community Volunteer

2023 Advisory Council

Barbara Abbett, Co-Chair
Former Executive
Mallinckrodt

**Stuart Greenbaum, Ph.D
Co-Chair**
Professor Emeritus,
Olin School of Business
Washington University—St. Louis

Gerald Early, Ph.D
Merle Kling Professor
of Modern Letters
Washington University
in St. Louis

Mike Ferman
Retired Rubin Brown, LLP
Partner and Managing Director

Stephen E. Green
Retired Krilogy Financial, LLP
Executive

Rabbi Elizabeth Hersh
Senior Rabbi
Temple Emanuel

Charles Lowenhaupt
Chairman & Partner
Lowenhaupt & Chasnoff, LLC

Marylen Mann
Chairman Emeritus
OASIS Institute

Allen Palmquist
Trust & Family Officer Advisor
Parkside Financial Bank & Trust

Linda Ray
Community Volunteer

Thomas Ray
Executive Editor
WealthCounsel, LLC

Sanford Scott
Area President
Midwest Regional Bank

Susie Sivewright
Community Volunteer

Lawrence E. Thomas
Retired Partner
Edward Jones



2650 Olive
St. Louis, MO 63103
314-371-6500
www.providentstl.org

